

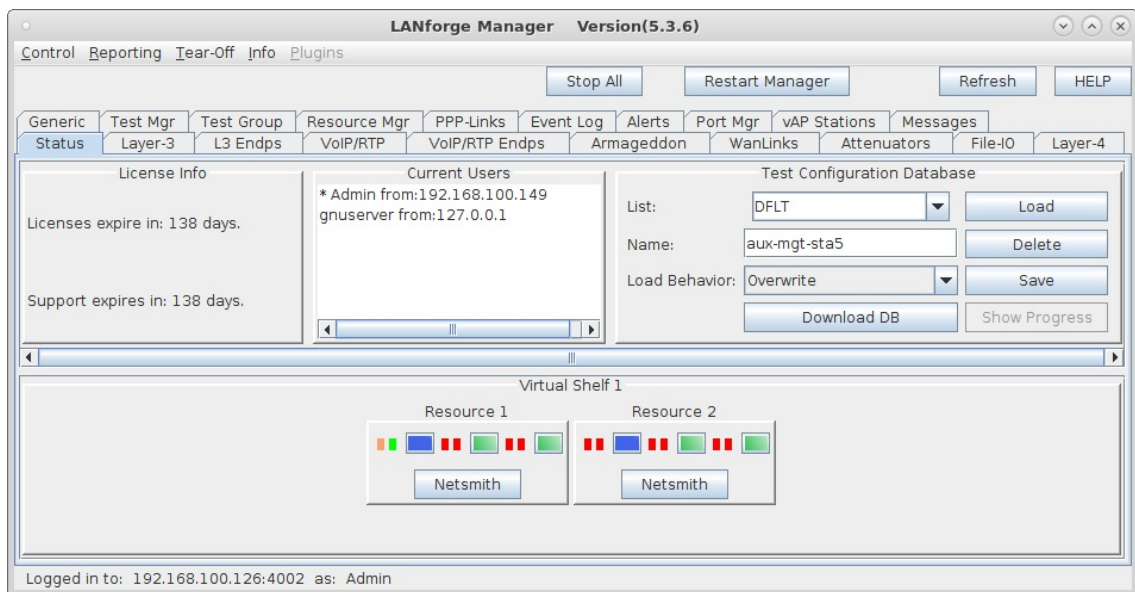
Configure Auxiliary Management Interfaces

Goal: Allow LANforge to create its own wireless management network.

In cases where it is not convenient to use an existing management network, LANforge WiFi systems can be configured to provide their own WiFi management network. This may be especially useful when testing in environments where LANforge needs to be moved around or where you have no good access to existing management LANs. This example assumes that you already know how to create and configure VAP and Stations in LANforge.

1. Configure LANforge for Auxiliary Management.

- A. Connect LANforge systems through the normal management LAN for initial configuration. The resources should be visible in the management tab



- B. In this case, we are using wiphy0 for the Aux-Mgt interfaces. On the manager system, configure wiphy0 to be on the desired channel, create a virtual AP on wiphy0, and configure it appropriately. The **Aux-Mgt** checkbox should be selected, a static IP should be assigned, and an appropriate SSID configured. The AP Aux-Mgt port will automatically serve DHCP and will try to NAT and route packets to the wired Management interface.

The screenshot shows the configuration window for a virtual access point (vap0) on the interface If0350-6f84. The window is titled "vap0 (If0350-6f84) Configure Settings".

Port Status Information:
Current: LINK-UP GRO NONE
Driver Info: Port Type: WIFI-AP Parent: wiphy0

Port Configurables:
Standard Configuration | Advanced Configuration | Misc Configuration | Custom WiFi

Enable:
 Set IF Down
 Set MAC
 Set TX Q Len
 Set MTU
 Set Offload
 Set PROMISC

Services:
 HTTP
 FTP

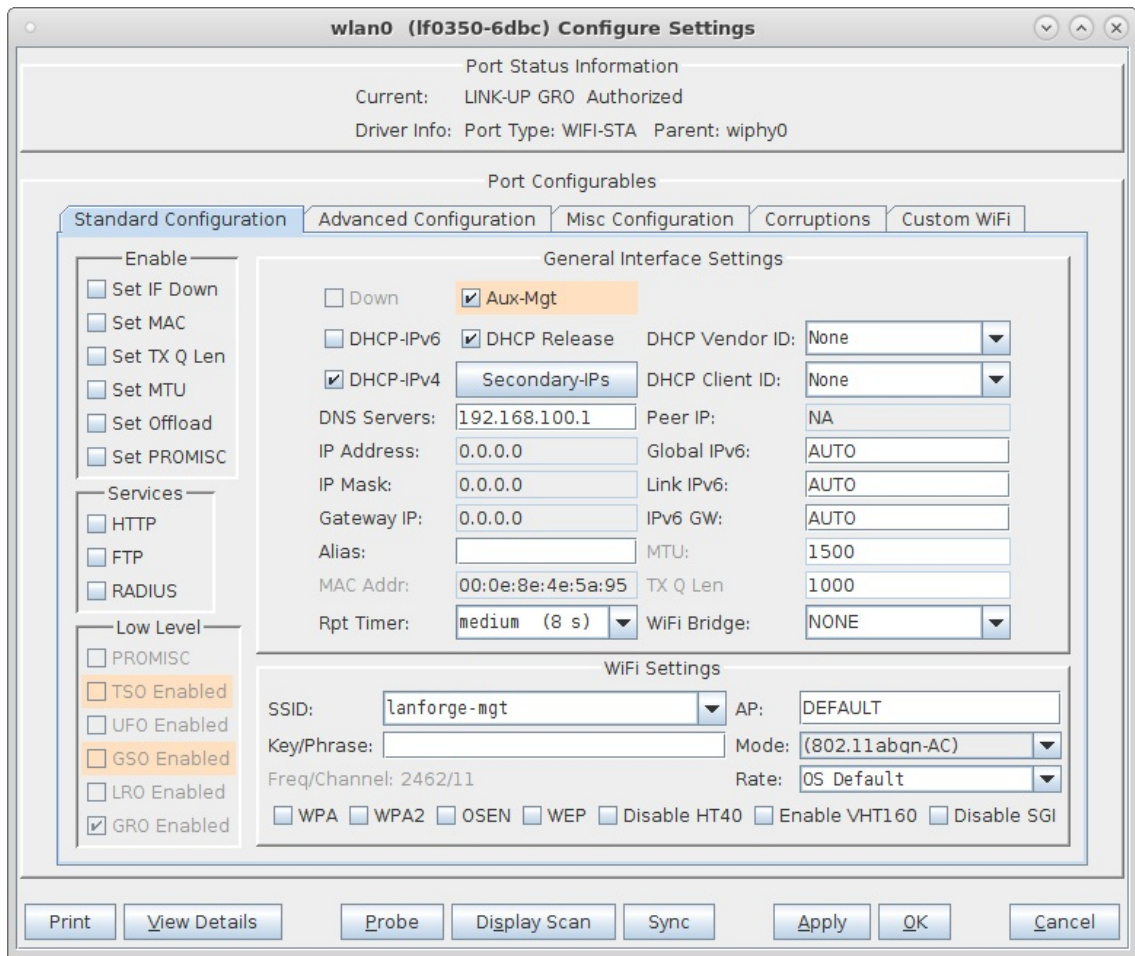
Low Level:
 PROMISC
 TSO Enabled
 UFO Enabled
 GSO Enabled
 LRO Enabled
 GRO Enabled

General Interface Settings:
 Down Aux-Mgt
 DHCP-IPv6 DHCP Release DHCP Vendor ID: None
 DHCP-IPv4 Secondary-IPs DHCP Client ID: None
DNS Servers: BLANK Peer IP: NA
IP Address: 99.99.1.1 Global IPv6: AUTO
IP Mask: 255.255.255.0 Link IPv6: AUTO
Gateway IP: 0.0.0.0 IPv6 GW: AUTO
Alias: MTU: 1500
MAC Addr: 00:0e:8e:75:3d:8d TX Q Len: 1000
Rpt Timer: medium (8 s) WiFi Bridge: NONE

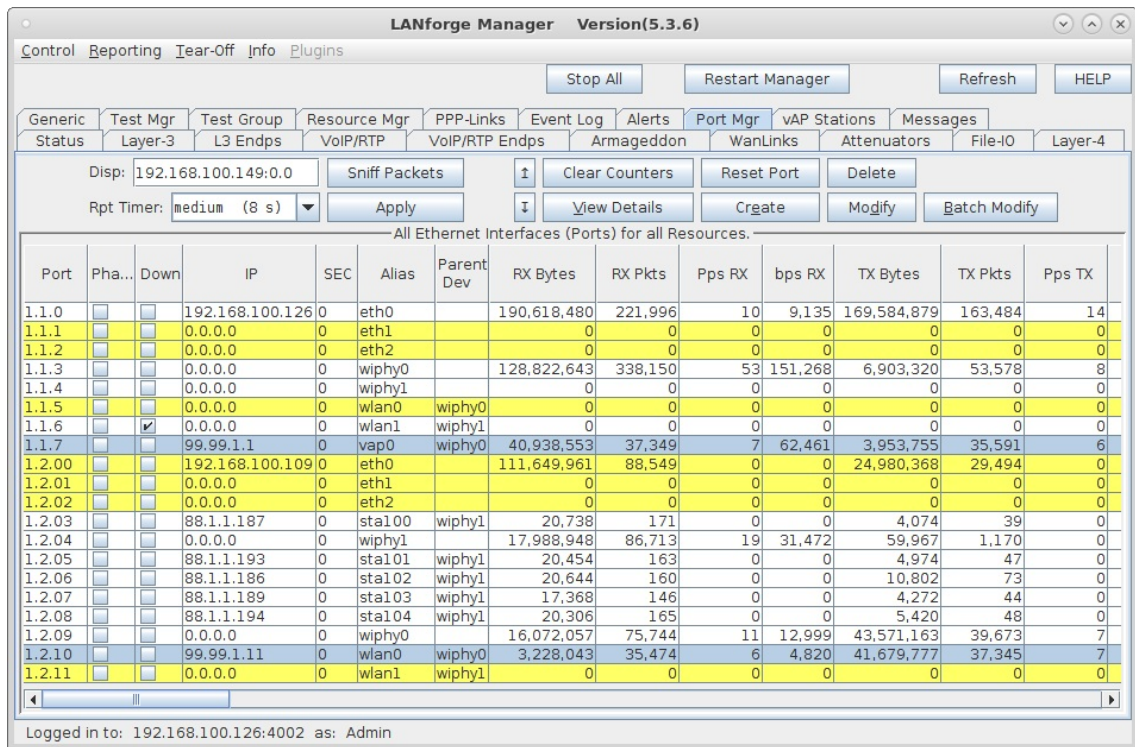
WiFi Settings:
SSID: lanforge-mgt AP: DEFAULT
Key/Phrase: Mode: (802.11abgn-AC)
Freq/Channel: 2462/11 Rate: OS Default
DTIM-Period: 2 Max-STA: 2007
Beacon: 240
 WPA WPA2 OSEN WEP Disable HT40 Disable HT80 Enable VHT160 Disable SGI
 Verbose Debug

Buttons: Print, View Details, Logs, Probe, Display Scan, Sync, Apply, OK, Cancel

- C. On the other resources, configure the wlanX interface to connect to the AP on the manager system, and select the **Aux-Mgt** checkbox.



- D. The Port-Mgr tab should look something like this when the Aux-Management interfaces are configured.



- E. To test that it works properly, you can now remove the wired Managment port connection and wait about 1 minute for the old connection to time out and re-connect to the Auxiliary Management port. Or, just reboot systems with the wired ports unplugged and they should be discovered on the Aux-Mgt ports promptly.

