

## Connecting with PuTTY

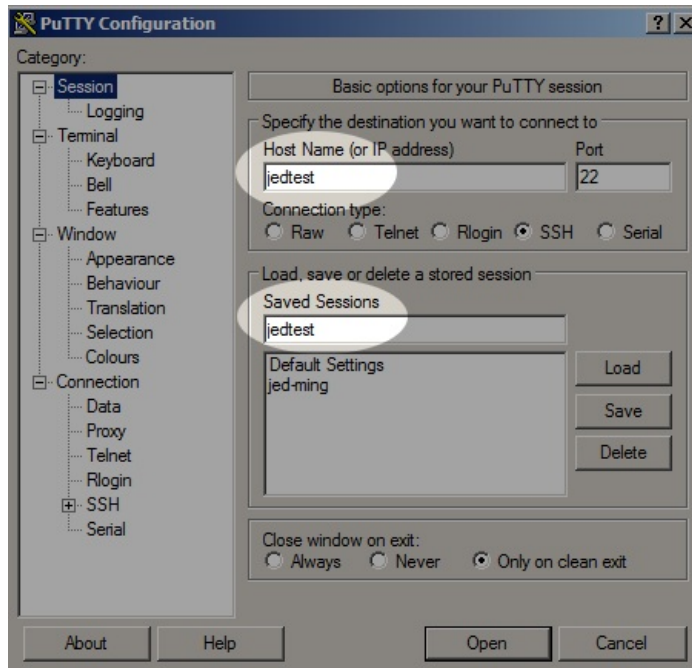
**Goal:** Using PuTTY on Windows to connect to LANforge Linux servers.

Lots of tasks, like scripting, can be done over SSH from your Windows desktop. Here are a few steps to help you customize your PuTTY terminal to work faster.

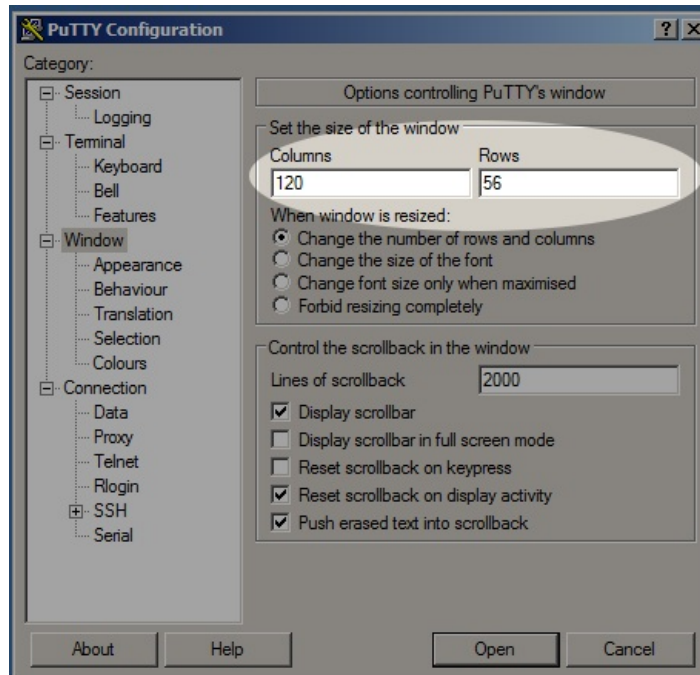


### 1. Configuring a PuTTY Session

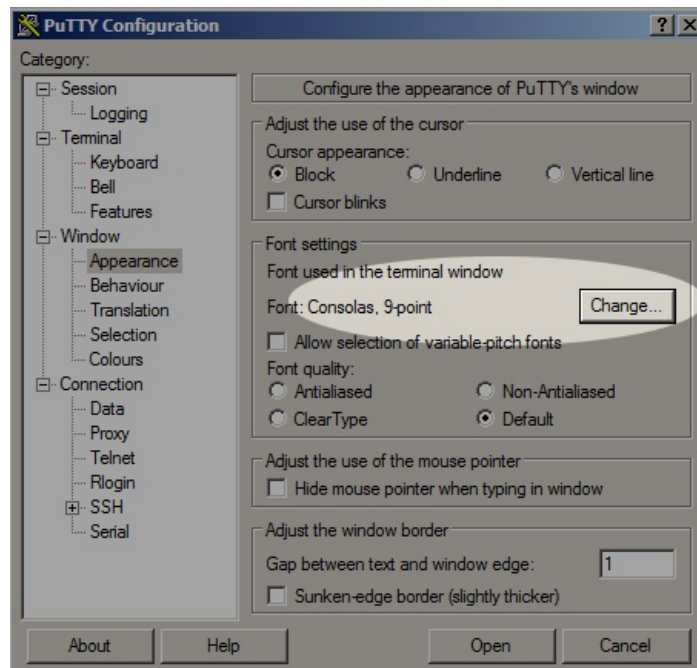
- A. When you double click on the PuTTY icon and it launches, you can start customizing your session preferences. We'll name this session jedtest



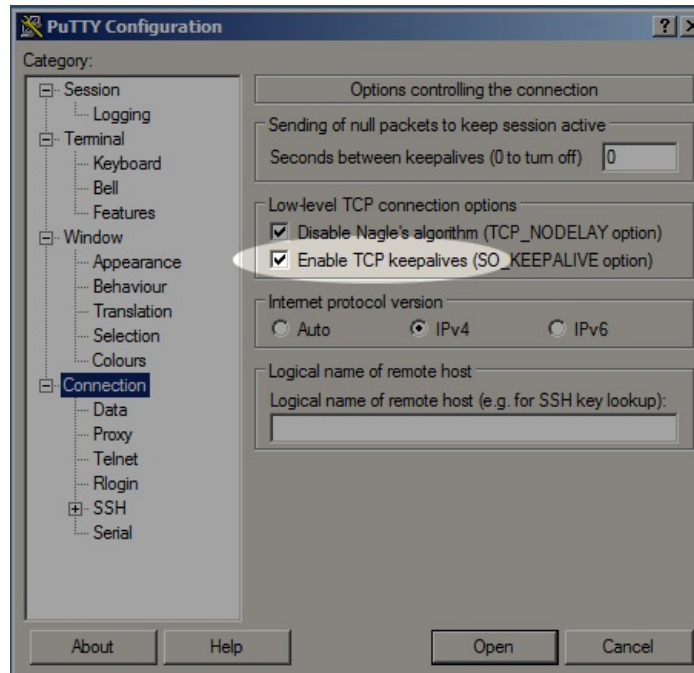
B. Let's default the window to something large, like 120 columns and 56 rows.



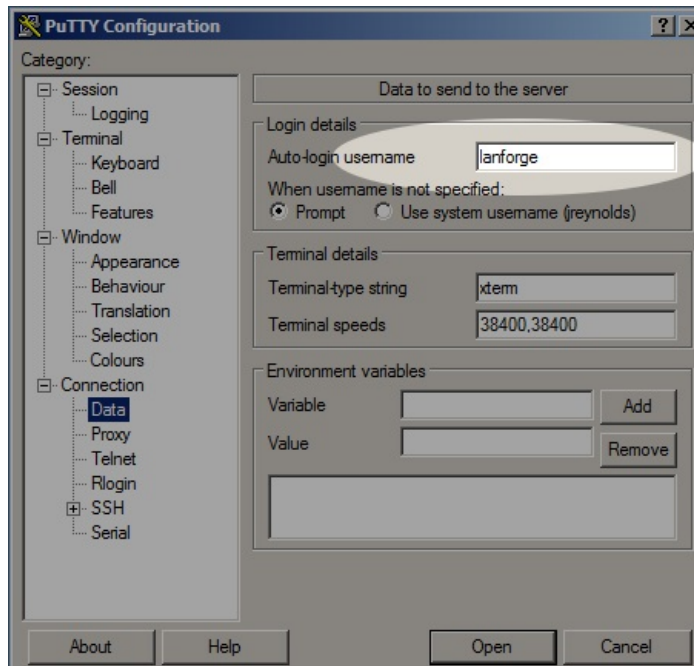
C. The Fixed font can be replaced with the Consolas font.



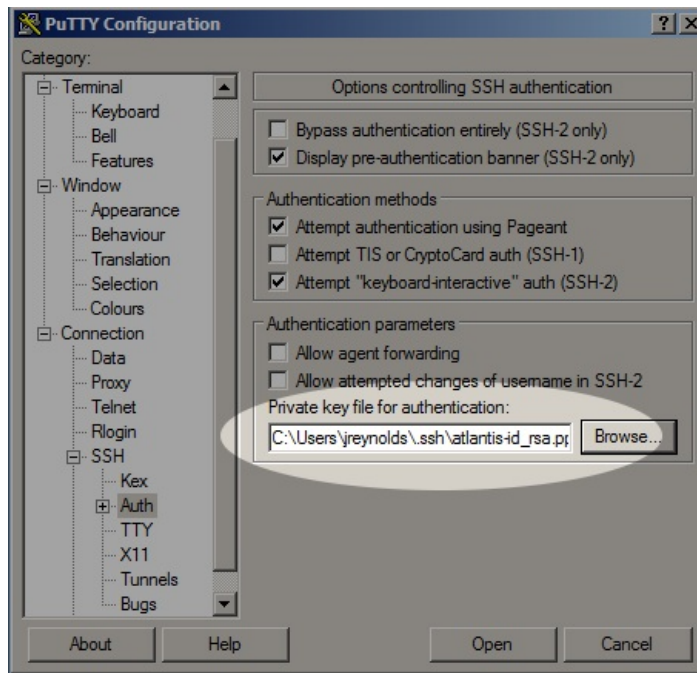
D. Let's turn on TCP Keep-alive and set IPv4 as the default networking protocol.



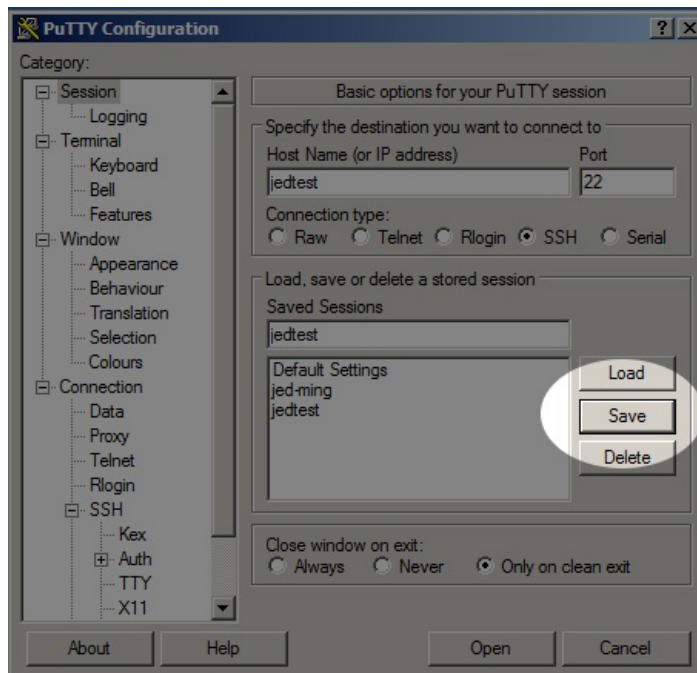
E. We login to LANforge resources with user `lanforge`



F. Generating a SSH keypair is not difficult. Let's enter the path to our public key file.



G. We have done our PuTTY config. Now back to the top **Session** screen, and click **Save**

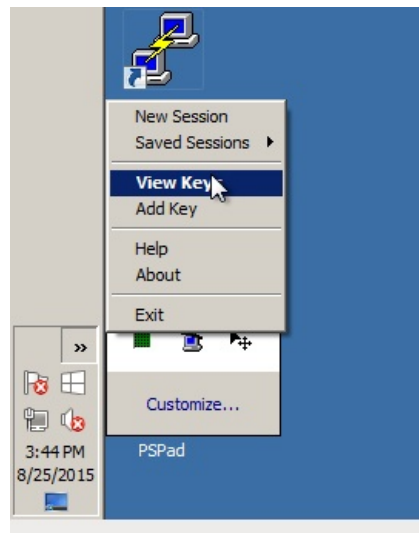


## 2. Configure Pageant with your public key

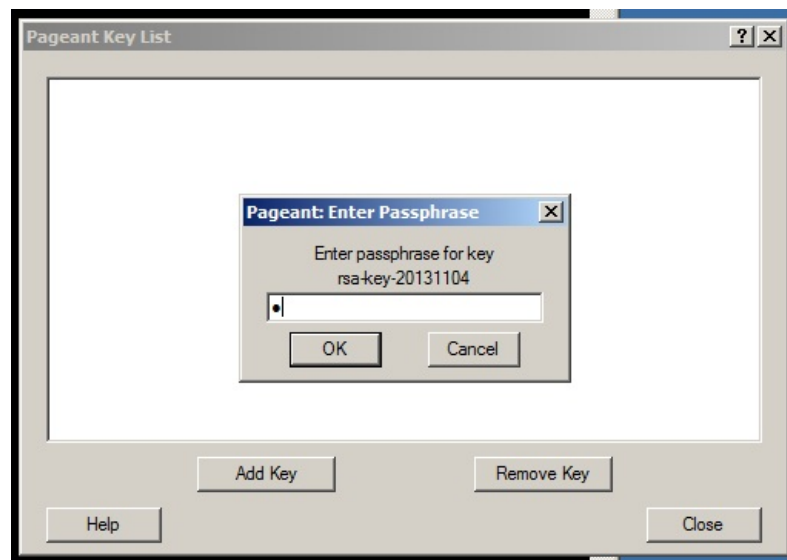
- Create your own public ssh key. For more information see [WinScp Net](#)
- Start Pageant. Configure it to load on startup.
- In the System Tray you will see the Pageant icon.



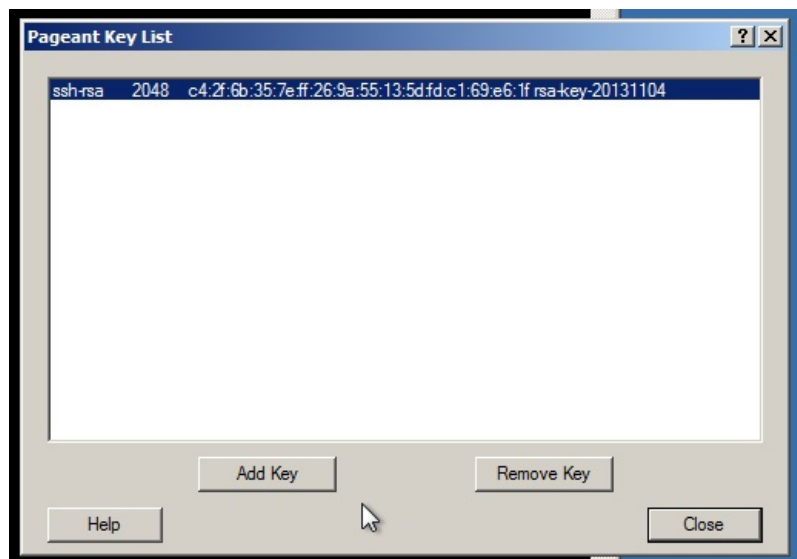
D. **Right-click** the Pageant icon and click **Add Key** to select your key



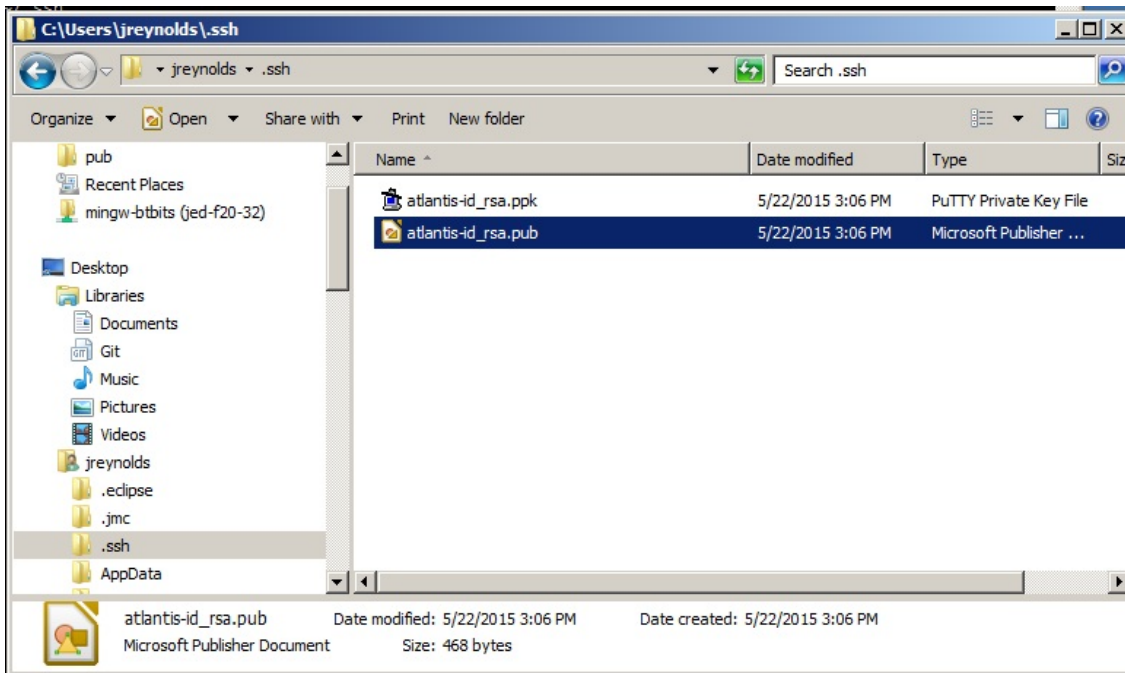
E. You will need to provide your pass-phrase to load your key



F. We see a loaded key



G. Here is our key, we will view the `.pub` file to copy out the public key.

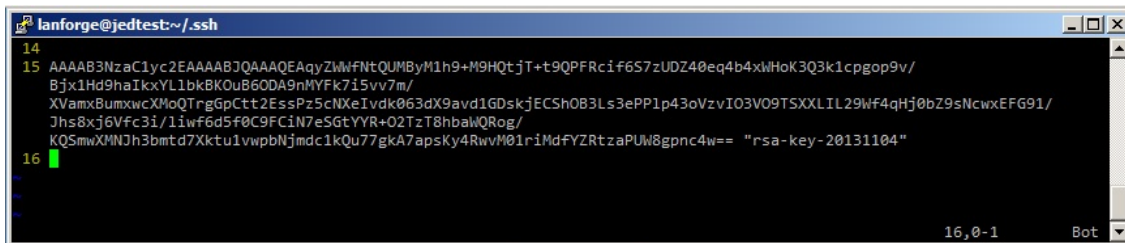


H. In a putty window you will log into your LANforge server and edit `/home/lanforge/.ssh/authorized_keys`

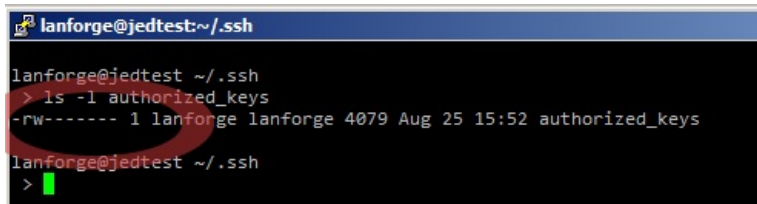
I. Copy the text and place the "Comment" section at the end when you paste it into your ssh

```
0      10     20     30     40     50     60     70     80
----- BEGIN SSH2 PUBLIC KEY -----
Comment: "rsa-key-20131104"
AAAAB3NzaC1yc2EAAAABJQAAAQEAqyZWfntQUMByM1h9+M9HQjt+t9QPFRcif6
S7zUDZ40eq4b4xwHok3Q3k1cpgop9v/Bjx1Hd9haIkkYL1bkBK0uB60DA9nMYFk7
i5vv7m/XVamxBumxwXMoQTrGpCtt2EssPz5cNXeIvdk063dX9avd1GDskjECSh
0B3Ls3ePP1p43oVzvIO3V09TSXXLIL29Wf4qHj0bZ9sNcwEFG91/Jhs8xj6Vfc3
i/1iWf6d5f0C9FCiN7eSGtYYR+02TzT8hbaWQRog/KQSmwXMNjH3bmtD7Xktu1vw
pbNjmdc1kQu77gkA7apsKy4RwvM01riMdFYZrtzaPUW8gpnc4w==
----- END SSH2 PUBLIC KEY -----
```

J. Here is the public key string, with newlines and spaces removed. The Comment text goes at the end.



K. Check the permissions of the `authorized_keys` file. You might need to use the command `chmod 600 authorized_keys` to correct the permissions.



L. The next time we load the jedtest PUTTY session we should not be prompted for our password.