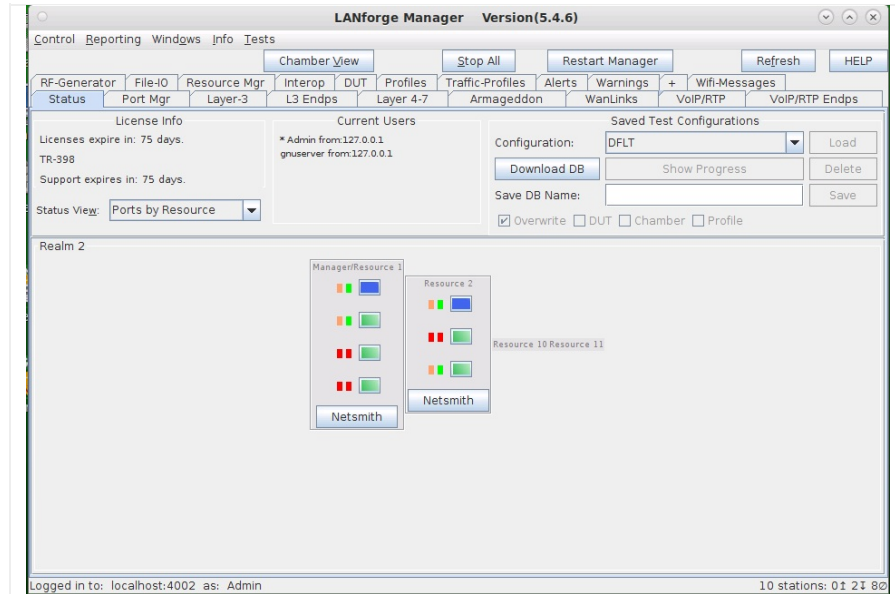


## Clustering multiple LANforge systems together

**Goal:** Cluster multiple LANforge systems together to use while Wifi network testing. Clustering enables multiple LANforges to act as one large LANforge.

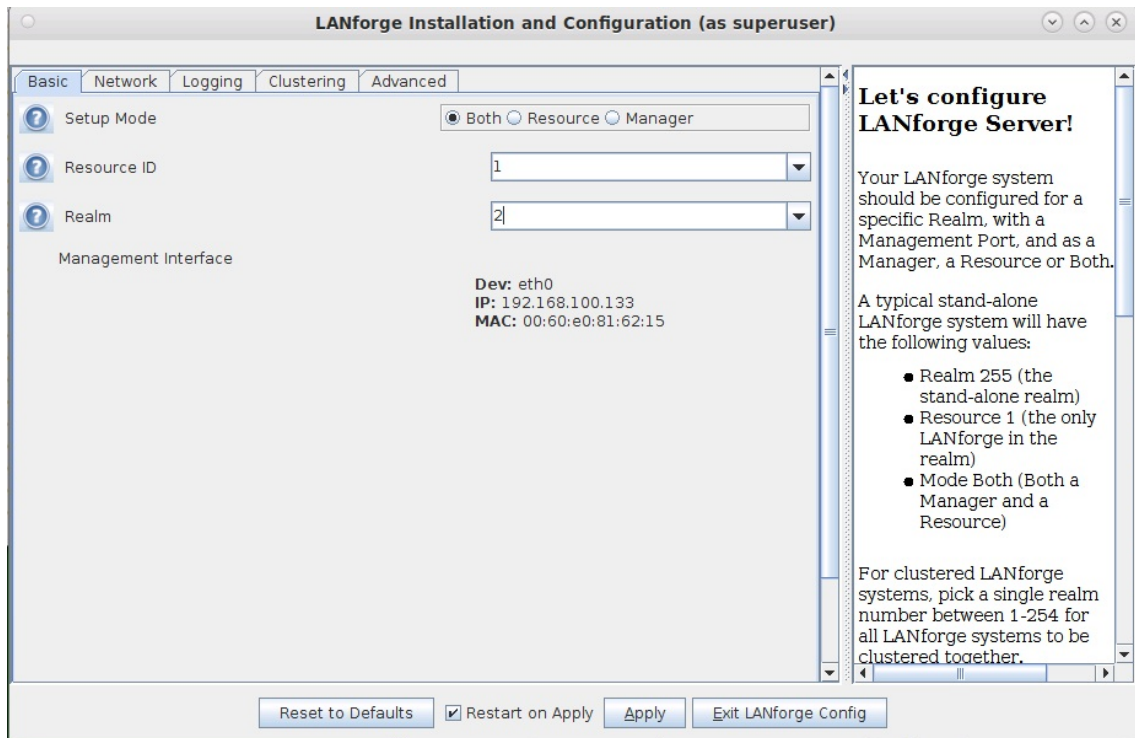
Multiple LANforge machines can be used as a group with one **manager** LANforge.



1. An unclustered LANforge is both 'Manager' and 'Resource'. In a cluster (with multiple LANforges), there is one LANforge that is a 'Manager' and 'Resource' and there are other LANforges that are only 'Resources'. The LANforges that are only a 'Resource' use the first LANforge as their 'Manager'. There are two ways to cluster. One way is via the command line, second is via the User Interface. This cookbook demonstrates how to cluster via the User Interface. First, configure the first LANforge (which is typically both a 'Resource' and 'Manager')
  - A. Open a VNC/RDP window to the LANforge wished to be used as the 'Manager' and 'Resource' of the final cluster. Click on the Configure LANforge icon located on the VNC session desktop.



- B. Once the 'LANforge Installation and Configuration (as superuser)' window opens, click on the Basic tab. Set the Setup Mode to Both, Resource ID to 1, and pick a realm 1-254 (example below is realm 2). Realm 255 means the LANforge is un-clustered.



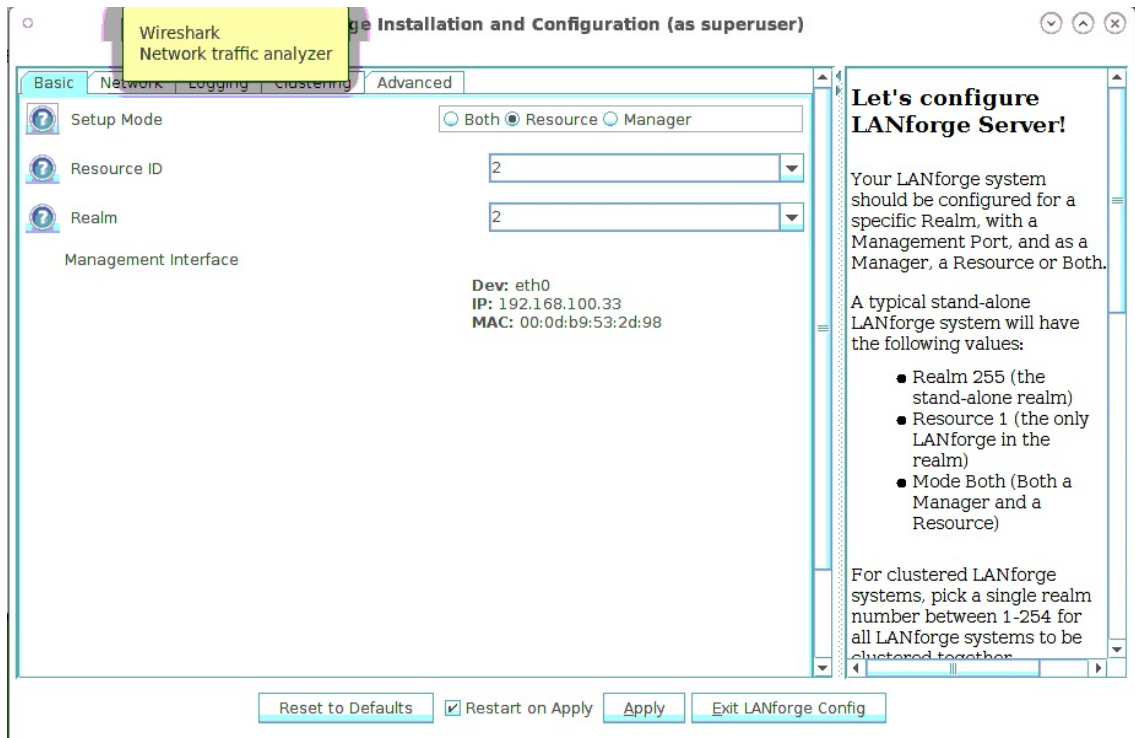
- C. Click on Apply and Exit LANforge Config to save settings.

2. Next, configure the following LANforges to cluster to the first LANforge. These LANforges will be only Resources.

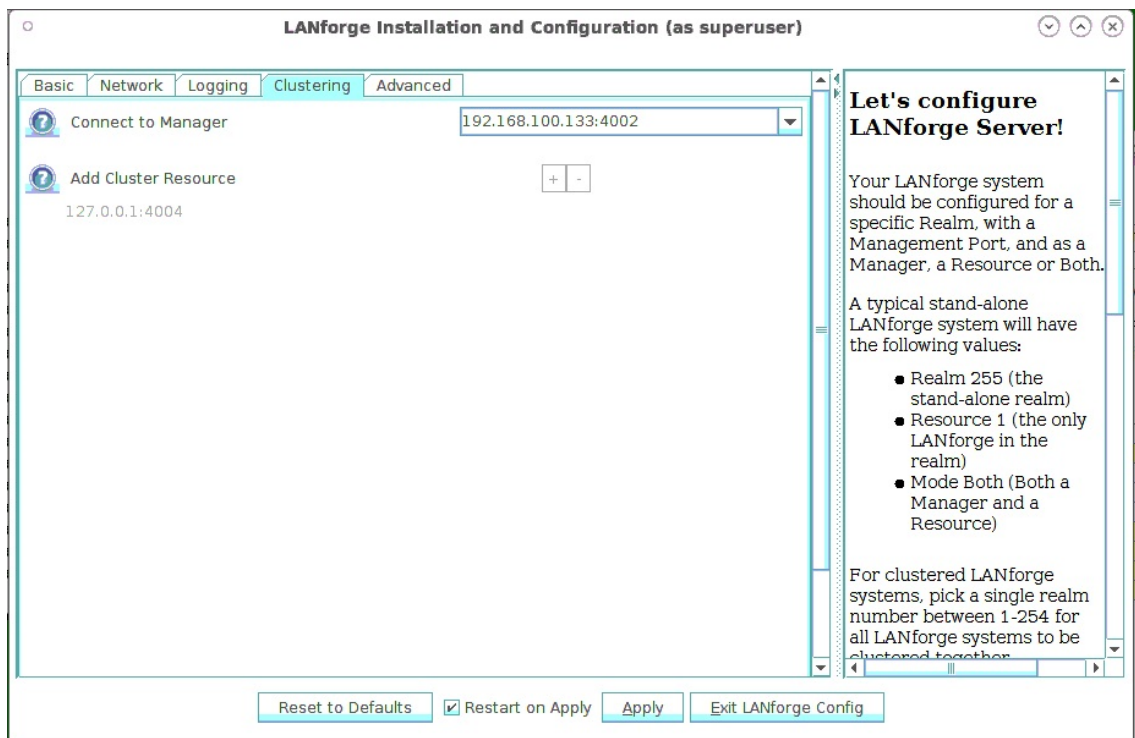
- A. Open a VNC/RDP window to the LANforge wished to be used as the 'Manager' and 'Resource' of the final cluster. Click on the Configure LANforge icon located on the VNC session desktop.



- B. Once the 'LANforge Installation and Configuration (as superuser)' window opens, click on the Basic tab. Set the Setup Mode to Resource, Resource ID to 2 or what the next unused Resource number is, and pick the same realm as the manager LANforge (in our example, realm 2).



- C. Click on the Clustering tab and in the Connect to Manager input box, put in the Manager's IP address followed by a ':4002'



- D. Click on Apply and Exit LANforge Config to save settings.

3. Restart LANforge Manager on all LANforges of cluster. The 'Status' tab of 'the Manager' of the clustered systems should show multiple resources now, as shown in the example below. If systems are not clustering and LANforge version build dates are too far apart between systems in cluster, LANforges may need to be upgraded so build version dates are closer to each other. Please contact [support@candelatech.com](mailto:support@candelatech.com) for assistance.

**LANforge Manager Version(5.4.6)**

Control Reporting Windows Info Tests

Chamber View
Stop All
Restart Manager
Refresh
HELP

RF-Generator
File-I/O
Resource Mgr
Interop
DUT
Profiles
Traffic-Profiles
Alerts
Warnings
+
Wifi-Messages

Status
Port Mgr
Layer-3
L3 Endps
Layer 4-7
Armageddon
WanLinks
VoIP/RTP
VoIP/RTP Endps

**License Info**

Licenses expire in: 75 days.  
TR-398

Support expires in: 75 days.

Status View: Ports by Resource

**Current Users**

\* Admin from:127.0.0.1  
gnuserver from:127.0.0.1

**Saved Test Configurations**

Configuration: DFLT Load

Download DB Show Progress Delete

Save DB Name:

Overwrite  DUT  Chamber  Profile

**Realm 2**

Manager/Resource 1

Netsmith

Resource 2

Netsmith

Resource 10 Resource 11

Logged in to: localhost:4002 as: Admin 10 stations: 0 1 2 8 0