

Automated Probing of Ports for information

Goal: Probe a port for information on that port.

We will learn how to use a script to probe a port for more information. We will also look at the output from the GUI, JSON response, and the script itself. Use the [port_probe.py](#) script as a reference.

1.

Using the Script

A. Command Line Options

A. `--port_eid portEID`

Specifies the eid of the port to be probed, if this option is used, the name will default to **1.1.eth0**.

B. Running the script

A. As an example, we can run the script using:

`./sta_probe_test.py --port_eid 1.1.wlan1`

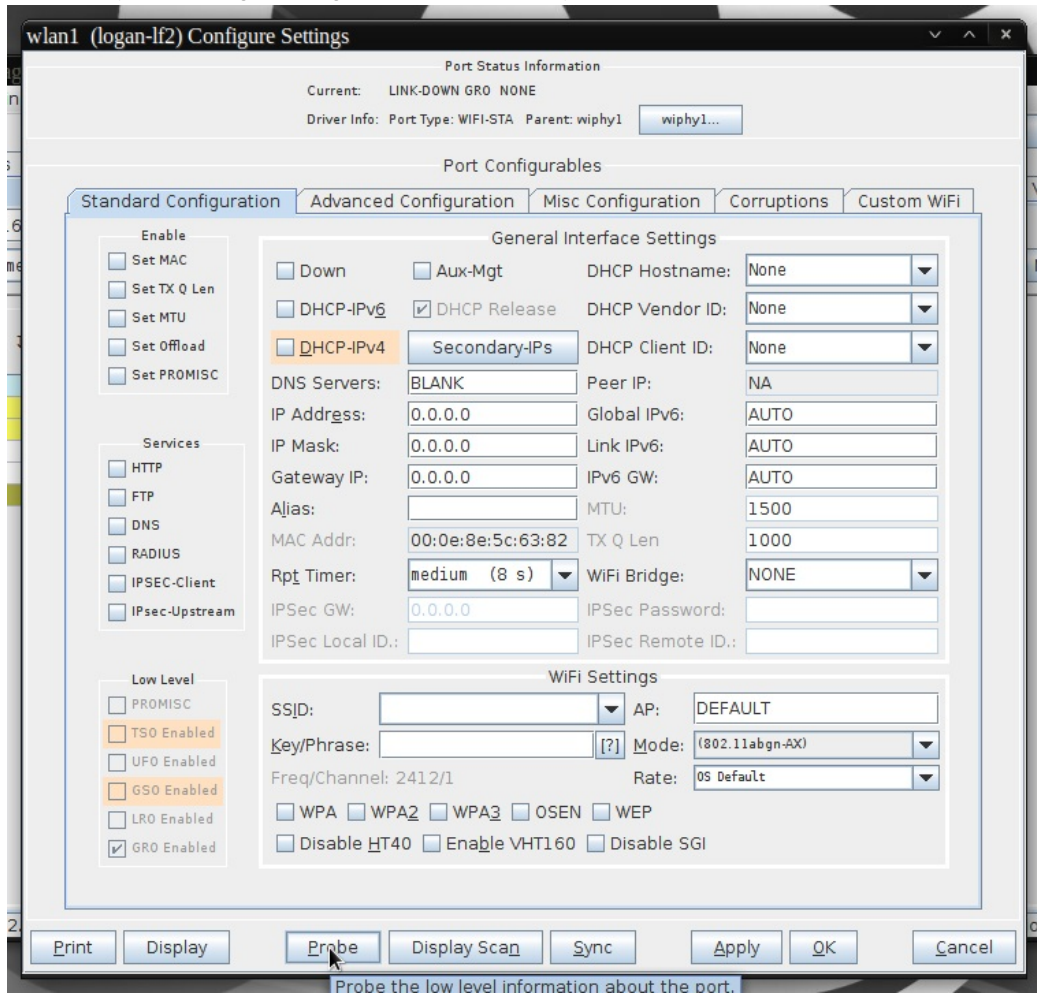
This example will probe the existing wlan1 port

2.

Probe Results From the GUI

A. In order to view this page we will need to choose a port to use and start probing.

A. First we will open the configure settings window for our chosen port:



B. Next we will click the probe button at the bottom of the window and another window will popup with the probe information:

